



# SK-100

## Scan Kiosk

SCANTECH ID<sup>®</sup>  
CHAMPTEK Group

### Introduction

The SK-100 model is a multifunction scan kiosk designed for diversified applications in self-service, ID identification, information service, multimedia service, digital signage and your customized interactive applications and services in every environment of retail, transportation, medical care, hospitality and office building. SK-100 model is the best self-service kiosk solution with powerful hardware, standardized Android platform, and flexible hardware options in compact body. It comes with security protected web-based management tools allowing easy management from remote. SK-100 model brings productivity, efficiency and convenience to your business and service .

### Technical Feature Keynotes

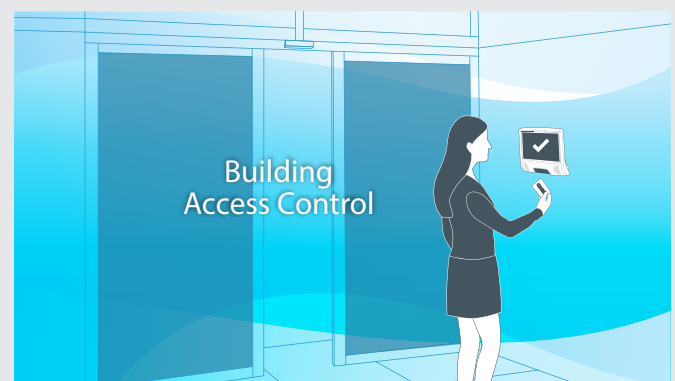
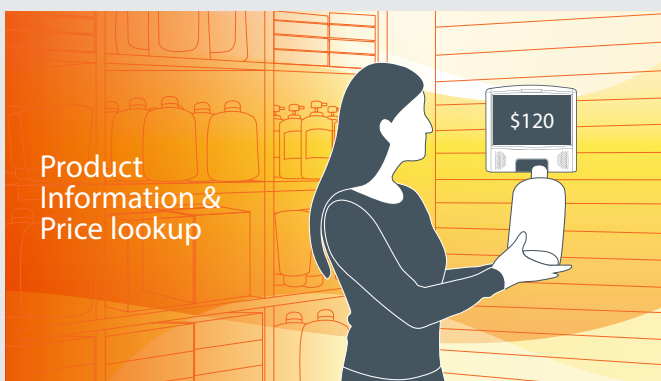
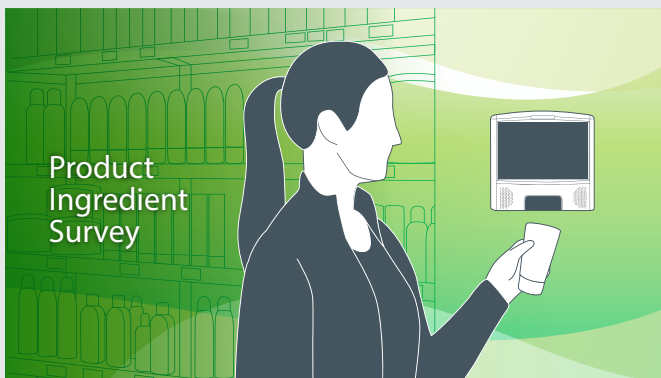
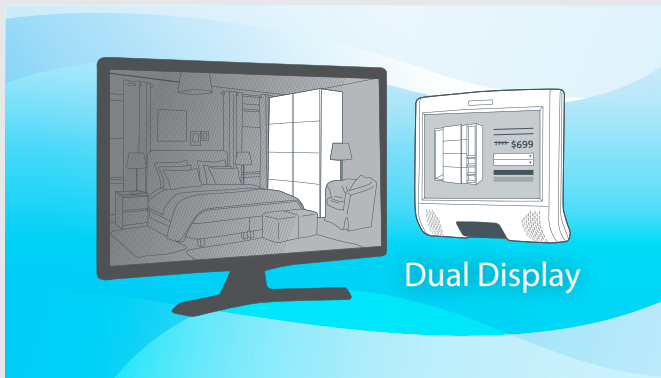
The SK-100 device is built with hardware capability of:

- 10.1-inch LCD display with capacitive multitouch screen
- Android 9.0 operating system
- LAN and WIFI network connectivity in option
- 2D imager scanner, NFC reader in option
- Scalable options in PoE, video camera, Bluetooth audio
- Audio and video streaming or playback
- Dual Screen feature via HDMI port
- 3 USB ports for peripheral expansion (barcode scanner, smartcard reader, printer, keyboard, mouse, flash disk)

# SK-100

## Application Keynotes

The SK-100 could be deployed for self-service and interactive applications including and not limited to:



# System Specifications

## • Processor

ARM Quad-core CPU

## • Operating System

Android 9.0

## • Display

Size	10.1-inch TFT-LCD
Active Area	217x136mm (WxH)
Aspect Ratio	16:10
Resolution	WUXGA 1920x1200 pixels
Colour	16.7M
Touch Screen	Capacitive type
Multitouch	up to 5 points (subject to application)

## • Data Capture/Output

Barcode Scanner	2D area imager scanner (1D/2D decoding)
NFC Reader	Compliant with Near Field Communication (NFC) ISO/IEC standard, supports MIFARE®, ISO 14443A/B, ISO15693, ISO 18092 Tag and FeliCa® cards (optional)

## • Memory

RAM	LPDDR4-2GB
Internal Storage	EMMC-32GB
External Storage	Micro SD Car(Support 256GB max.)

## • Network/Interface

Wired LAN	10/100Mb Ethernet 802.3; Power over Ethernet 802.3af (optional)
Wireless LAN(Optional)	802.11b/g/n/ac, 2.4GHz and 5GHz dual band
Encryption Protocol	WPA, PSK and WPA Enterprise security
Blue Tooth	BT4.2

## • Multimedia

Audio Output	Loudspeaker (3Watt) x 2, Bluetooth Audio
Audio/Video Input	5MP video camera with microphone (optional)
Image Format	PNG, JPEG, GIF, BMP
Audio Format	WAV, WMA, MP3
Video Format	MPEG-1,MPEG-2,MPEG-4 MP3, H.263, H.264, H.265

## • Peripheral(I/O Ports)

USB x 3, RS232 x 1, LAN x 1 (for Ethernet or PoE), GPIO x 2, 2 pin output(Exit Gate & Power Gate)(optional)

## • Power

DC 12V/2A Power Adapter or Power over Ethernet 802.3af (optional)

## • Weight

Approx. 1.25 kg

## • Environmental

Operating Temperature	0°C to 40°C (32°F to 72°F)
Storage Temperature	-20°C to 60°C (-4°F to 140°F)
Humidity	up to 95% RH (non-condensing)

## • Regulatory

CE, FCC, RoHS

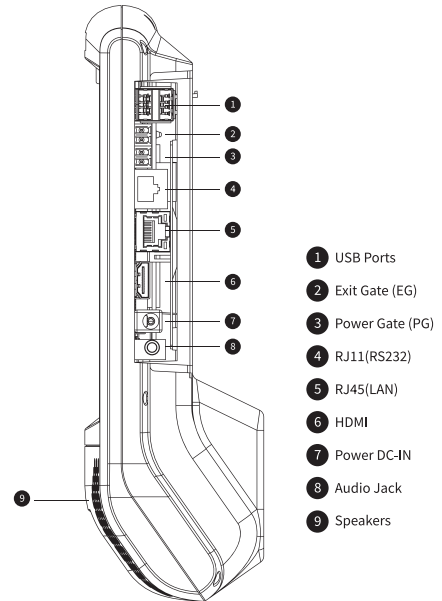
## • Accessories

Power Adapter  
VESA Mounting Screw Set

## • Dimensions

HxWxD 252 x 238.15 x 71.5 mm

## System Specifications



### • Optional Feature:

I GPIO Ports(EG/PG)	Optional
13.56MHz RFID NFC	Optional
Camera + Distance/Light	Optional
Sensors + Microphone module	

Camera + Microphone	Optional
Dual Stereo Speakers	Included
HDMI Port	Included
Audio Jack	Included
VESA Mount Bracket(75x75mm)	Included

## Data Capture Specifications

### • 2D Area Imager Scanner

Scanner technology	2D area imager scanner for 1D/2D barcode decoding
Light Source	632±5nm White Light LED

Resolution	0.127mm/5mil UPC/EAN, 0.26/10mil 2D barcode
Ambient Light	up to 100,000 Lux

## Software & Applications

<b>Development Tools</b>	Software Development Kit (SDK)
<b>Management Tools</b>	Web Management, Remote Package Update
<b>Default Applications</b>	Android version: 1D/2D Barcode Scanner, NFC Reader, Media Player, Promo Tool, Desktop Configurator, Price Checker Demo App *software availability is subject to different hardware configuration.

The specifications are subject to change without prior notice, for complete details and update-to-date product information please contact your sales representative.

1. Adapter shall be installed near the equipment and shall be easily accessible.
2. The plug considered as disconnect device of adapter.
3. The product shall be connected to a USB interface of version USB2.0 or higher.

Only indoor use for band 5150-5250MHz.

Hereby, Champtek Incorporated declares that this product is in compliance with essential requirements and other relevant provisions of Directive 2014/53/EU.

This product is allowed to be used in all EU member states.

#### RADIO FREQUENCY MAXIMUM TRANSMIT POWER AND FREQUENCY BAND INFORMATION

Frequency bands	Maximum output power(EIRP)
WIFI ( 2412-2472MHz )	17.88dBm
WIFI ( 5150-5250MHz )	16.13dBm
WIFI ( 5725-5825MHz )	10.33dBm
EDR ( 2402-2480MHz )	8.00dBm
BLE ( 2402-2480MHz )	-0.18dBm